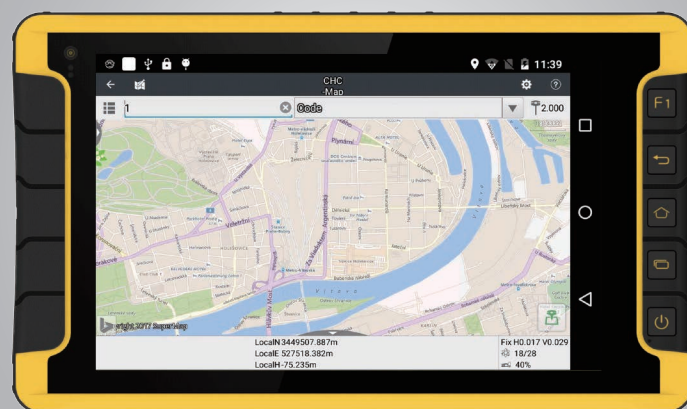


# LT600 Series

## GIS Data Collection

- Android 5.1 operating system
- GPS + GLONASS/BDS supported
- 1.5 GHz eight-core CPU
- 4G network modem
- 8 megapixel rear camera
- Support high precision stylus
- IP65 and survives 1.5 m fall onto concrete
- 9000 mAh high performance Li-ion battery



LT600 series could work as both GNSS controller which performs bigger display, and tablet which enhances the accuracy for GIS data collection. It supports CHC LandStar 7 and GIS applications on Google Play.

LT600 series can track GPS + GLONASS or GPS + BDS. It is a FAD-W positioning tablet with IP65 standard and surviving with 1.5 m fall onto concrete.

LT600 series has 9000 mAh Li-ion battery which means it can continuously working more than 12 h. It will extremely enhance the efficiency for field work. Meanwhile, it uses Android 5.1 platform, so that users can save lots of time on data uploading and processing. LT600 can reach 1 m to 2 m accuracy with autonomous status; LT600T can reach 10 cm accuracy with external antenna and under ideal environment while using NTRIP service.



# ■ Technical Specifications

| Comparison                             |                              |   |
|--|------------------------------|---|
| Type                                   | LT600                        | LT600T  |
| Channel                                | 72                           | 72  |
| Satellite Signals                      | GPS: L1 + GLONASS: L1        | GPS: L1 + GLONASS: L1   |
|  | GPS: L1 + BDS: B1 (optional) | GPS: L1 + BDS: B1 (optional)                                  |
| Update Rate                            | 1 Hz                         | 1 Hz  |
| Correction                             | RTCM3.x                      | RTCM3.x   |
| Output                                 | NMEA 0183                    | NMEA 0183   |
| Cold Start                             | 30 s                         | 30 s  |
| Hot Start                              | 1 s                          | 1 s   |
| Reacquisition                          | 1 Hz                         | 1 Hz  |
| SBAS                                   | 2 m                          | 2 m   |
| Differential Correction <sup>(1)</sup> | Stand Alone: <2.5 m          | Stand Alone: <2.5 m   |
|  | NTRIP: None                  | NTRIP: Float: < 50 cm<br>Fixed: 10 cm (with external antenna) |

## System

- Operating System: Android 5.1
- CPU: Eight-core 1.5 GHz
- RAM: 3 GB
- Flash Memory: 32 GB
- External Memory: Micro SD, up to 128 GB

## Display

- Size: 8" Corning Gorilla® Glass touch screen
- Resolution: 1280 x 800
- Bright: 450 cd/m<sup>2</sup>
- Touch-screen: Capacitive touch, 5 points touch screen
- Stylus: High-precision pointing pen

## Camera

- Front: 2 megapixel
- Back: 8 megapixel
- Flash light

## Physical

- Dust and Water Proof: IP65
- Shock and Vibration: 1.5 m (4.9 ft) fall onto concrete
- Humidity: 5%RH - 95%RH (without condensation)
- Size (L × W × H): 235 mm × 138 mm × 30 mm  
(9.3 in × 5.4 in × 1.2 in)
- Weight: 660 g (23.3 oz) with battery
- Environment
  - Operating: -20°C to +60°C (-4°F to +140°F)
  - Storage: -30°C to +70°C (-22°F to +158°F)

## Communications

- WiFi: 802.11 b/g/n
- Network Modem:
  - TDLTE, TDSCDMA, EDGE, GSM, WCDMA
- Bluetooth®: V4.1
- USB: Micro USB, OTG (support hotplug)

## Electrical

- Li-ion Battery Capacity: 9000 mAh, 3.8 V
- Operating Time<sup>(2)</sup>: > 12 h (continuous work)
- Charging Time: < 4 h

## Physical Properties

- G-sensor
- Light sensor
- Distance sensor
- E-compass
- Gyroscope
- NFC (optional)
- Scanner: Bar code & QR code scanner (optional)

(1) Accuracy and reliability specifications may be affected by multipath, satellite geometry and atmospheric conditions. Performances assume minimum of 5 satellites, follow up of recommended general GPS practices. (2) Operating time varies based on temperature.

Specifications are subject to change without notice.

© 2017 Shanghai Huace Navigation Technology Ltd. All rights reserved. The Bluetooth® world mark and logos are owned by Bluetooth SIG, Inc. The CHC and CHC logo are trademarks of Shanghai Huace Navigation Technology Limited. All other trademarks are the property of their respective owners – Rev. Sep 2017

CHC - Shanghai Huace Navigation Technology Ltd.  
599 Gaojing Road, Building C  
201702, Shanghai, China  
Tel : +86 21 542 60 273